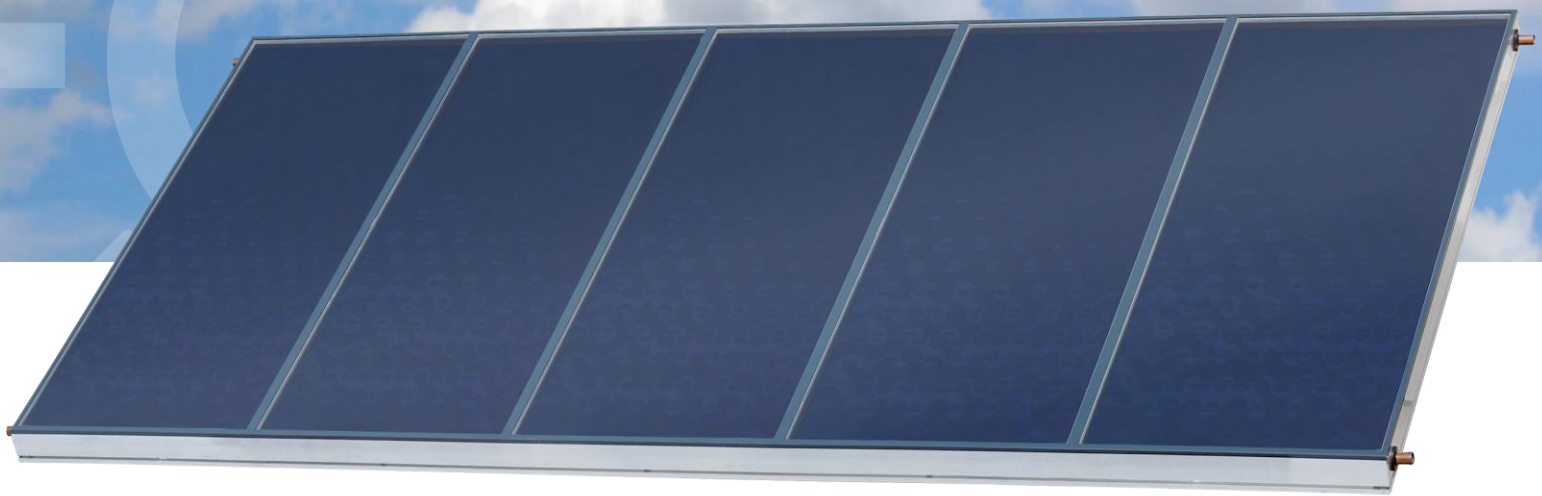


High grade solar thermal components  
Made in Berlin

# K5Giga+

LARGE SCALE COLLECTOR



Large scale collector with 12,5 m<sup>2</sup>  
for medium to big systems

AR-glass and foil cover  
for medium to high temperature applications

Elegant design with  
small gross to net ratio

2 pole mounting system  
for fast and simple installation

# Technical Data

<b>Type of construction</b>	Large scale collector for on-roof, flat-roof and field mounting, other mounting types on demand	
<b>Absorber type</b>	KBB absorber with aluminum sheet and copper tubes Meander with $\varnothing$ 28 mm manifold	
<b>Dimensions (L x B x H)</b>	2160 x 5750 x 118 mm	
<b>Gross area</b>	12,42 m <sup>2</sup>	
<b>Aperture area</b>	11,60 m <sup>2</sup>	
<b>Total weight dry</b>	195 kg	
<b>Liquid content</b>	10,2 l	
<b>Reference area</b>	Gross area	Aperture area
<b>Efficiency <math>\eta_{0,b}</math> / <math>\eta_0</math></b>	75,2 %	80,5 %
<b>Heat loss coefficient <math>a_1</math></b>	2,416 W/m <sup>2</sup> K	2,586 W/m <sup>2</sup> K
<b>Heat loss coefficient <math>a_2</math></b>	0,008 W/m <sup>2</sup> K <sup>2</sup>	0,009 W/m <sup>2</sup> K <sup>2</sup>
<b>Annual collector output (Würzburg, 50°C)</b>	580 kWh/m <sup>2</sup>	
<b>Annual collector output (Würzburg, 75°C)</b>	413 kWh/m <sup>2</sup>	
<b>Stagnation temperature</b>	240°C ( $G_s=1000$ W/m <sup>2</sup> , $\vartheta_{as}=30^\circ$ C)	
<b>Absorber coating</b>	High selective coating on aluminum sheet	
<b>Absorption / emissivity</b>	95 % / 5 %	
<b>Covering</b>	- Low iron, structured solar safety glass (ESG) with antireflective coating - Foil for reduction of convection losses between glass and absorber	
<b>Transmission of covering</b>	96,5 %	
<b>Impact resistance of covering</b>	Cover passed the optional impact resistance tests acc. ISO 9808	
<b>Hydraulic connection</b>	Parallel connection with collectors side-by-side	
<b>Collector connection</b>	Sideways 4 connectors $\varnothing$ 28mm bare tube or 1¼" male flat sealing	
<b>max. operation pressure</b>	10 bar	
<b>Heat insulation</b>	Mineral wool 70 mm	
<b>Collector case</b>	Aluminum frame, glass strip powder coated	
<b>Permissible wind and snow load</b>	3 kN/m <sup>2</sup> suction, 3 kN/m <sup>2</sup> pressure	
<b>Angle of inclination</b>	15° – 75°	
<b>Recommended heat transfer fluid</b>	Antifreeze mix based on propylene-glycol	
<b>Transport capacity</b>	- 40'-high-cube-container:	36 collectors
	- truck with 13,6 loading meter:	40 collectors
<b>Guarantee</b>	10 years	



KBB Kollektorbau GmbH  
Bruno-Bürger-Weg 142-144  
D-12439 Berlin  
Phone: +49(0)30-6781789-0  
Fax: +49(0)30-6781789-50  
info@kbb-solar.com  
www.kbb-solar.com